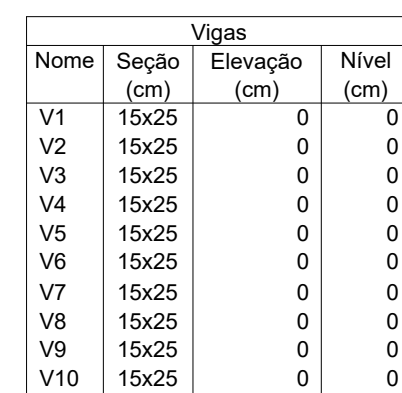


RELAÇÃO DO AÇO					
2xP1 2xS1		2xP3 4xS4		2xP5	
AÇO	N	DIAM (mm)	QUANT	C.UNIT (cm)	C.TOTAL (cm)
CA60	1	5.0	56	56	3136
	2	5.0	32	56.5	1808
CA50	3	6.3	112	80	8960
	4	10.0	32	130	4160
	5	10.0	32	94	3008

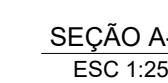
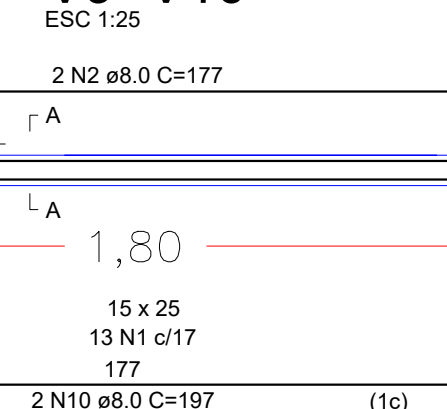
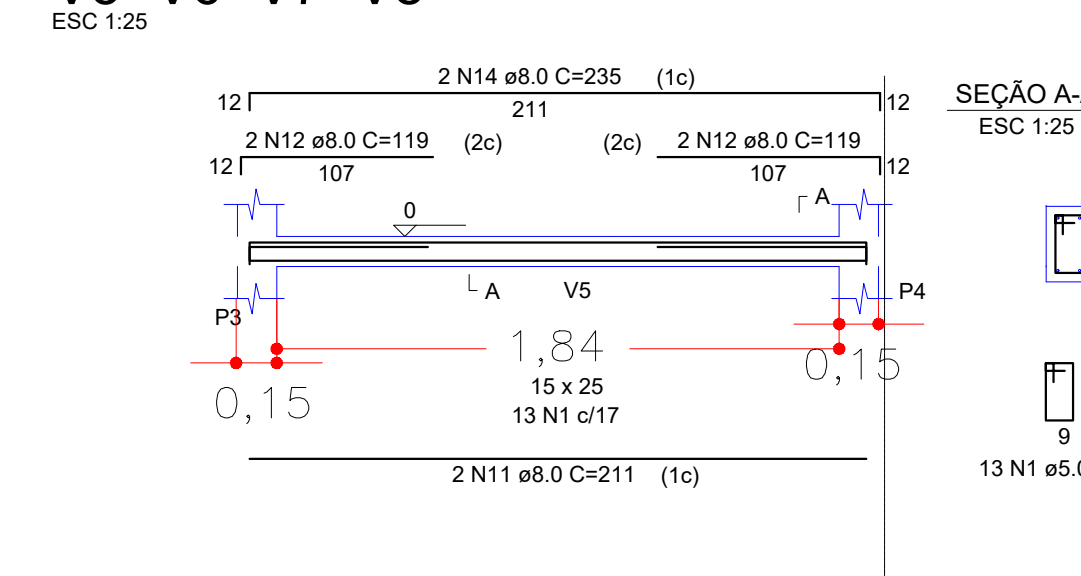
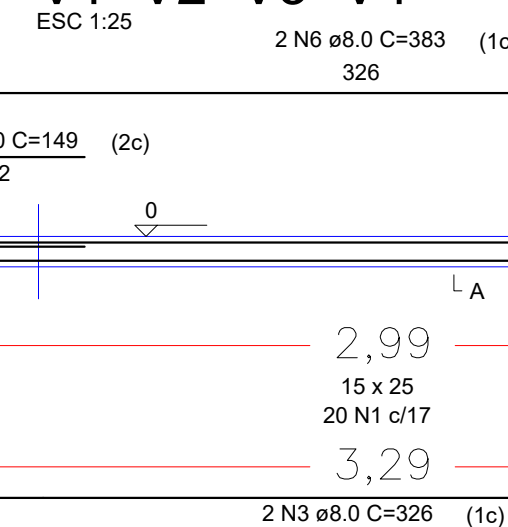
RESUMO DO AÇO			
AÇO	DIAM (mm)	C.TOTAL (m)	PESO + 10% (kg)
CA50	6.3	89.60	24.15
	10.0	71.68	48.65
CA60	5.0	49.44	7.62
PESO TOTAL (kg)			
CA50	72.8		
CA60	7.62		

	CONCRETO (m³)	FÓRMA (m²)
SAPATA	0.72	4.80
PILAR	0,21	5.95
TOTAL	0,93	10.75



Pilares			
Nome	Seção (cm)	Elevação (cm)	Nível (cm)
P1	11x20	0	0
P2	11x20	0	0
P3	11x20	0	0
P4	11x20	0	0
P5	11x20	0	0
P6	11x20	0	0
P7	11x20	0	0
P8	11x20	0	0

Legenda dos pilares	
	Pilar que passa



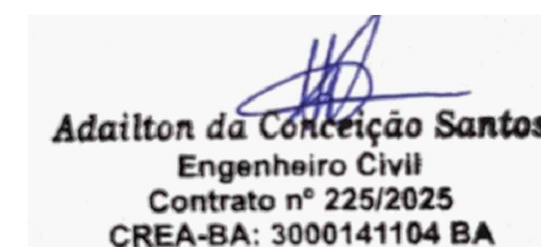
RELAÇÃO DO AÇO					
V1		V2		V3	
V4		V5		V6	
AÇO	N	DIAM (mm)	QUANT	C.UNIT (cm)	C.TOTAL (cm)
CA60	1	5,0	154	69	10626
CA50	2	8,0	4	205	820
	3	8,0	8	319	2552
	4	8,0	8	149	1192
	5	8,0	8	148	1184
	6	8,0	8	376	3008
	10	8,0	4	225	900
	11	8,0	8	204	1632
	12	8,0	8	119	952
	13	8,0	8	119	952
	14	8,0	8	278	1824

RESUMO DO AÇO			
AÇO	DIAM (mm)	C.TOTAL (m)	PESO + 10% (kg)
CA50	8.0	150.16	65.25
CA60	5.0	106.26	18.00
PESO TOTAL (kg)			
CA50	58.15		
CA60	18.0		



	CONCRETO (m³)	FÔRMA (m²)
BALDRAME	0.97	12.86
TOTAL	0.97	12.86

Nota: Este projeto se aplica nos 6 grupos de quiosques nesta mesma praça.



PROPRIETÁRIO:	
PREFEITURA MUNICIPAL DE ESPLANADA	
RESPONSÁVEL TÉCNICO:	ADAILTON DA CONCEIÇÃO SANTOS ENGENHEIRO CIVIL CREA-BA. 3000141104-BA

PROJETO

REFORMA DA PRAÇA LADISLAU CAVALCANTE

LOCAL: Avenida Mario Andreazza, Centro, Esplanada-Bahia

PLANTA:		
DETALHAMENTO QUIOSQUES		
ESCALA:	CONTROLE:	DATA:
INDICADA		25/07/2025
PROJETO:	ESTRUTURAL	

$$\frac{01}{02}$$